

SPYGLASS WOODS - LOT 5

PEBBLE BEACH, CALIFORNIA



Front Elevation



Rear Elevation

“Ready, Set, Build” Pebble Beach, Construction-Ready Dream House.

1121 SPYGLASS WOODS DRIVE

SpyglassWoodsLot5.com

Offered at \$915,000

Located on a quiet Pebble Beach lane along Spyglass Golf Course, and just minutes from Monterey Peninsula Country Club and all the famed attractions of Pebble Beach is this nearly half-acre site with fully approved and permitted plans for a 2,200 plus square foot cottage style single level home. This spacious stone estate features 2 bedrooms, a formal den, 3 and a half baths, an impressive great room, large kitchen, dining room, covered loggia with fire pit, plus an ample storage room off the double-doored 2 car garage. The master suite features a fireplace and his and hers baths with a generous' walk-in closet. The plans also include an approved guest house sharing this private forested setting. Take advantage of this rare opportunity to start construction on a new home without the extensive process of planning and approvals. With permit in hand and contractor ready to go, your custom Pebble Beach dream property awaits!.

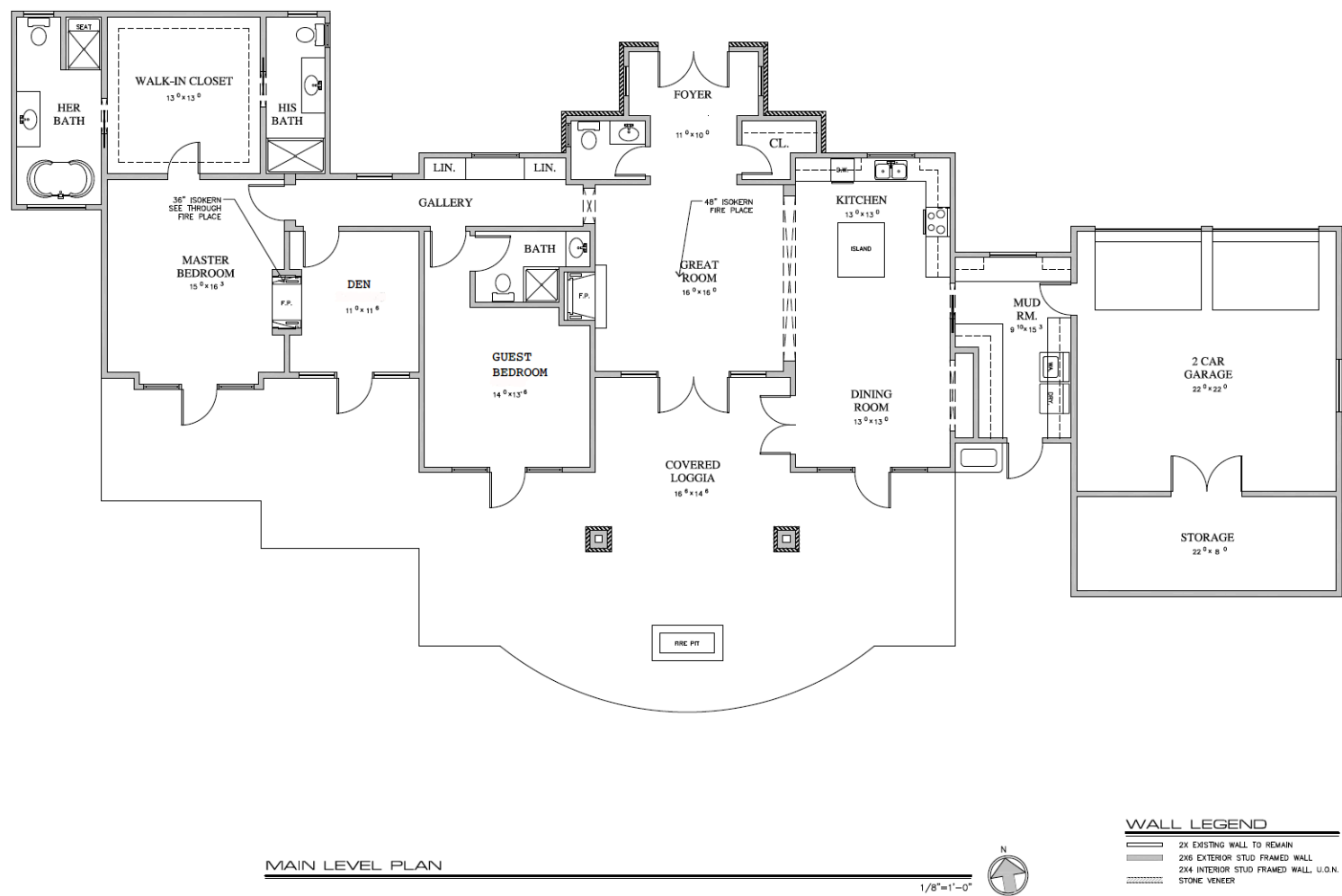


GLOBAL
LUXURY

TIM ALLEN CalBRE#00891159
c 831.214.1990
TIMALLENPROPERTIES.COM

TIM ALLEN
PROPERTIES

FLOOR PLAN



SPECIFICS

Lot Size:	0.5 Acres	Garage:	2
Total Square Footage:	2,200+/-	APN:	008-023-005
Number of Bedrooms:	2	Available Water:	0.5 AF
Number of Baths:	3.5		